

Library/Learning Commons Communiqué

August/September 2021 - Vol. 7, no.1

Welcome from Library & Academic Services *the Academic Heart of Campus*

Our services include:

- Library instruction and reference
- Academic Success Center (tutoring)
- Accessibility Services
- Career Services
- Study Abroad
- Testing Services

Library Hours

Regular semester hours resume Aug 23

Mon—Thu 7:30—Midnight

Fri 7:30 AM—7 PM

Sat & Sun Noon—9 PM

Academic Success Center

Mon—Thu 9am—9pm

Fri 9am—3pm

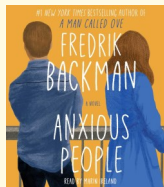
Sat CLOSED

Sun 5pm-9pm

Visit the ASC Front Desk starting 8/23 to schedule your tutoring sessions.

Join the Campus Read!

Anxious People by Fredrik Backman was selected as the 2021-22 Campus Read.



This fictional story features a disappearing bank robber and 8 anxious hostages who learn just how much they actually have in common with each other. Copies are available for checkout from the library's Circulation Desk, and a number of the library's fall events are connected to themes of the book.

September Events

Friday 09/10/21 at 7 PM:

Campus Read Event

"Light a Candle & Cycle the Globe" — Learn about QPR suicide prevention training, join us in lighting candles in support of suicide prevention and then cycle down to Birdseye Outfitters to kick off a month-long cycling fundraising campaign.



Monday 09/20/21 at 4 PM:

LSSU Library Culinary Series

"Make it personal: Owning your college food experience" with Bruce Wallis, Assistant Director of Food Service at the Leelanau School in Glen Arbor, MI.

Meet our New Librarian!

Karen Harag joins the LSSU Library this fall! You will see Karen at the Reference Desk and in the classroom helping with research questions. Originally from Wyoming, Michigan (a suburb of Grand Rapids), Karen is excited to be in the Upper Peninsula! With a BA in Theology, a BS in Business Administration, a Masters of Library and Information Science and a Masters of Education, clearly Karen loves to read and learn. But that's all boring stuff; out side of work, Karen spends her time hiking, kayaking, traveling, and generally seeking adventure.

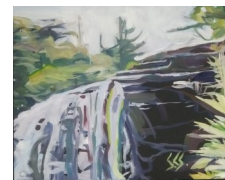
Accessibility Services

We work with any LSSU student who experiences a disability. This could be a physical impairment, mental health diagnosis, learning disability, or a food allergy. This may mean you had an Individualized Education Plan (IEP) or 504 Plan in high school. Any student interested in registering for services and putting accommodations in place should contact accessibility@lssu.edu.

This month in the Art Gallery

September 1-30, 2021:

"The Flow of Light: Upper Peninsula" Paintings by Shena Sloboda



Under the Falls—Golden Hour

Sloboda's primary focus has remained impressionism throughout her career. The greatly varied landscapes of the U.P. contribute inspiration, as well as memories gleaned from skylines, pensive moments, and mundane drives one experiences within their daily transit.

New In Testing Services

Starting this semester Testing Services will offer a tranquil study space that will be available Monday through Friday from 5pm until the Library closes. You must be a current LSSU student. Reserve the Testing Services Study Room at the Library Circulation Desk.