

LIBRARY LEARNING COMMONS COMMUNIQUE

September 2018—Volume 4, Issue 1

WELCOME TO LSSU!

Welcome to all of our new and returning Lakers! Know that the Library Learning Commons is the **academic heart of campus**. We have

wonderful staff to help you succeed. Stop by and see us in the Library Learning Commons area.

You dropped your anchor at LSSU, and now it's time to sail — we are here to help support YOUR success, so stop in and see what we have for you!

Library/Learning Commons locations

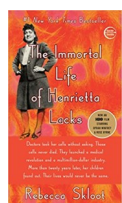
Library in the heart of the Shouldice Building

Academic Success Center (inside the Library) includes free tutoring, Math Center and Writing Center

Accessibility Services (outer hallway) LBR233

Career Services (outer hallway) LBR231/222

Testing Services (outer hallway) LBR251



Have you met Henrietta yet?

Be sure to check out the 2018-19 Campus Read, *The Immortal Life of Henrietta Lacks*, by Rebecca Skloot. We will be holding exciting events all year long in the Library, including book discussions in the Learning Commons on the 1st and 3rd Tuesdays of the month at 11am. Join us for these interesting conversations!



Nursing Parent's Room

Did you know that we have a locked private room for nursing mothers in the Library? Stop by our Circulation Desk to reserve the room or to check out the key.

Where's your zone?



You've told us, and we listened! Based on our users' feedback, we have new

sound level signage around the Library/Learning Commons to help you find the space that meets your needs. Look for the pillar signs and table tents that designate our **Collaborative Work**, **Quiet Conversation**, and **Silent Study** areas.

SEPTEMBER LIBRARY EVENTS

Palm of the Hand Memoir Writing Workshop



Join us for the Palm of the Hand Memoir Writing Workshop, held on the **first Tuesday of every month (Sept 4th) from noon to 1 pm**. Feel free to bring your lunch to the workshop. Led by librarians, learn how you can capture your life on paper, one memory at a time.

Screenings

Cancer Cell Research: The Way of All Flesh
BBC Documentary
Sept 12 at 4:30 pm

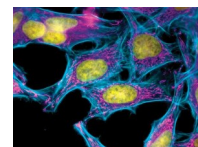
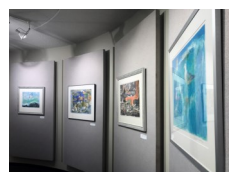


Photo credit © Omar Quintero

Black Man in a White Coat
C-SPAN Documentary
Sept 19 at 4:30 pm

Scholar Series: Prof. Ron Hutchins

"I don't see what their problem is...Medical staff always treat me well": The History and Hazards of Healthcare in America for People of Color
Sept 26 at 3:00 pm



Library Art Gallery

Lithographs by Emil Weddige from the LSSU Arts Center Collection will be on display from **Aug 20-Sept 30**.

LIBRARY HOURS - FALL SEMESTER

Sunday	10 a.m. - Midnight
Monday-Thursday	7:30 a.m. - Midnight
Friday	7:30 a.m. - 9 p.m.
Saturday	10 a.m. - 9 p.m.